

LARGE DOUBLER ASSEMBLY

40 GPM & 3,000 PSI

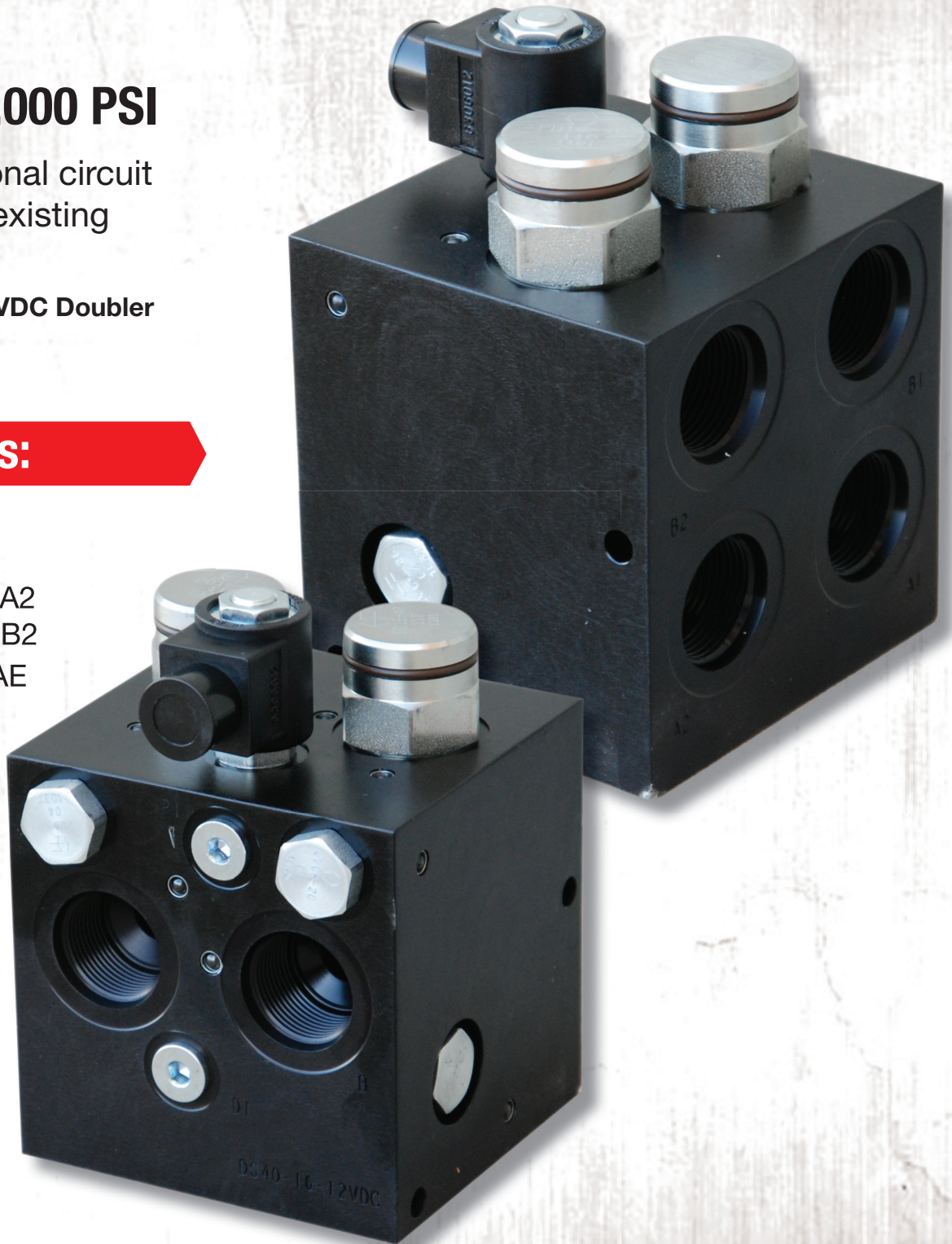
Provides additional circuit operation from existing valve.

PART # DS40-16-12VDC Doubler
Optional - 24 VDC

Specifications:

- Port #16 SAE
- Valve - A, B
- Cylinder 1: A1, A2
- Cylinder 2: B1, B2
- Drain: D1 #6 SAE

Drain required on all applications.



LARGE DOUBLER ASSEMBLY

Don't see the options you need? Contact DFP at sales@dakotafluidpower.com or dakotafluidpower.com

No adapters, hoses, qds or electrical components included in assembly. Please ask your local sales rep. for more information.

