

SMALL DOUBLER ASSEMBLY

Heavy Duty Assembly!

Our Small Doubler Assembly provides circuit operation from existing valve.

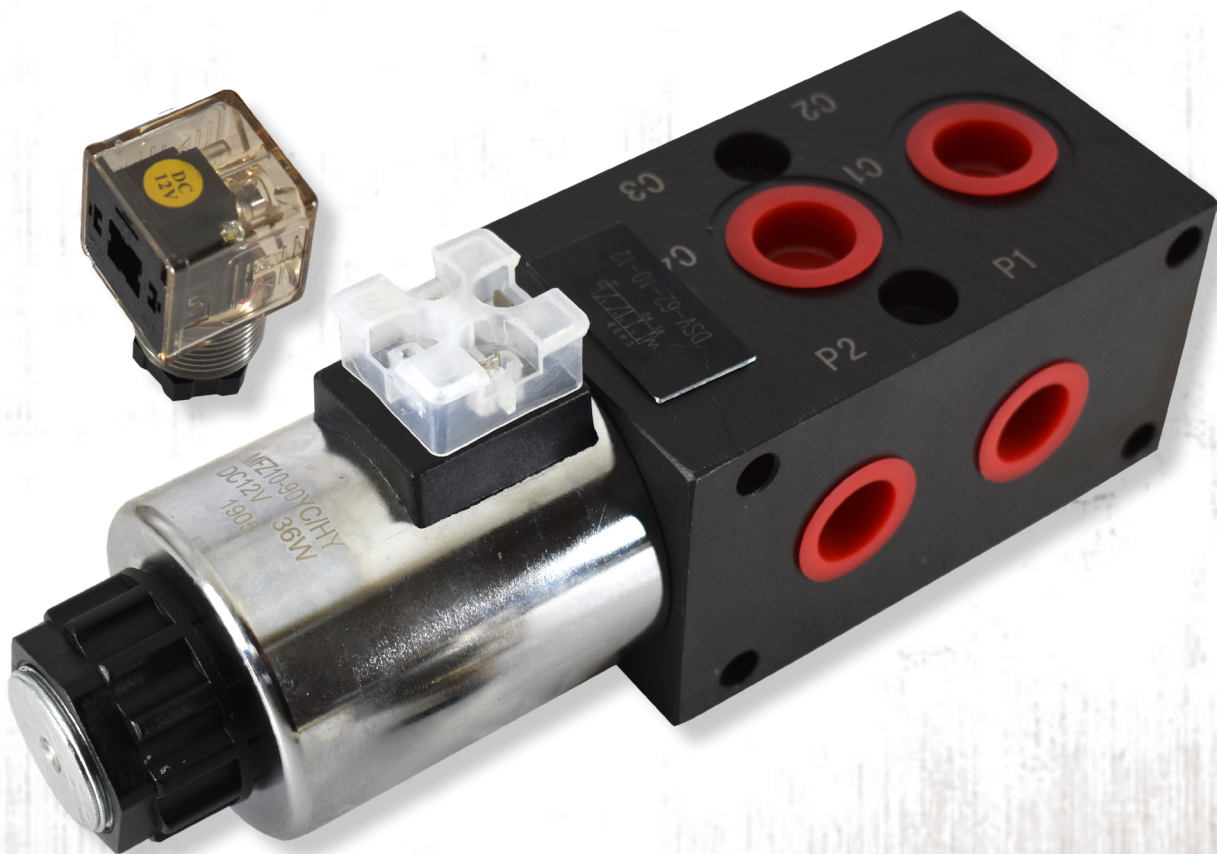
Part #: DSV-62-10-12

Additional Items

- **Field Wirable Electrical Connector:**
2291-1001
- **Electrical Connector w/ 15' Cordset:**
VAS22-A653-5M

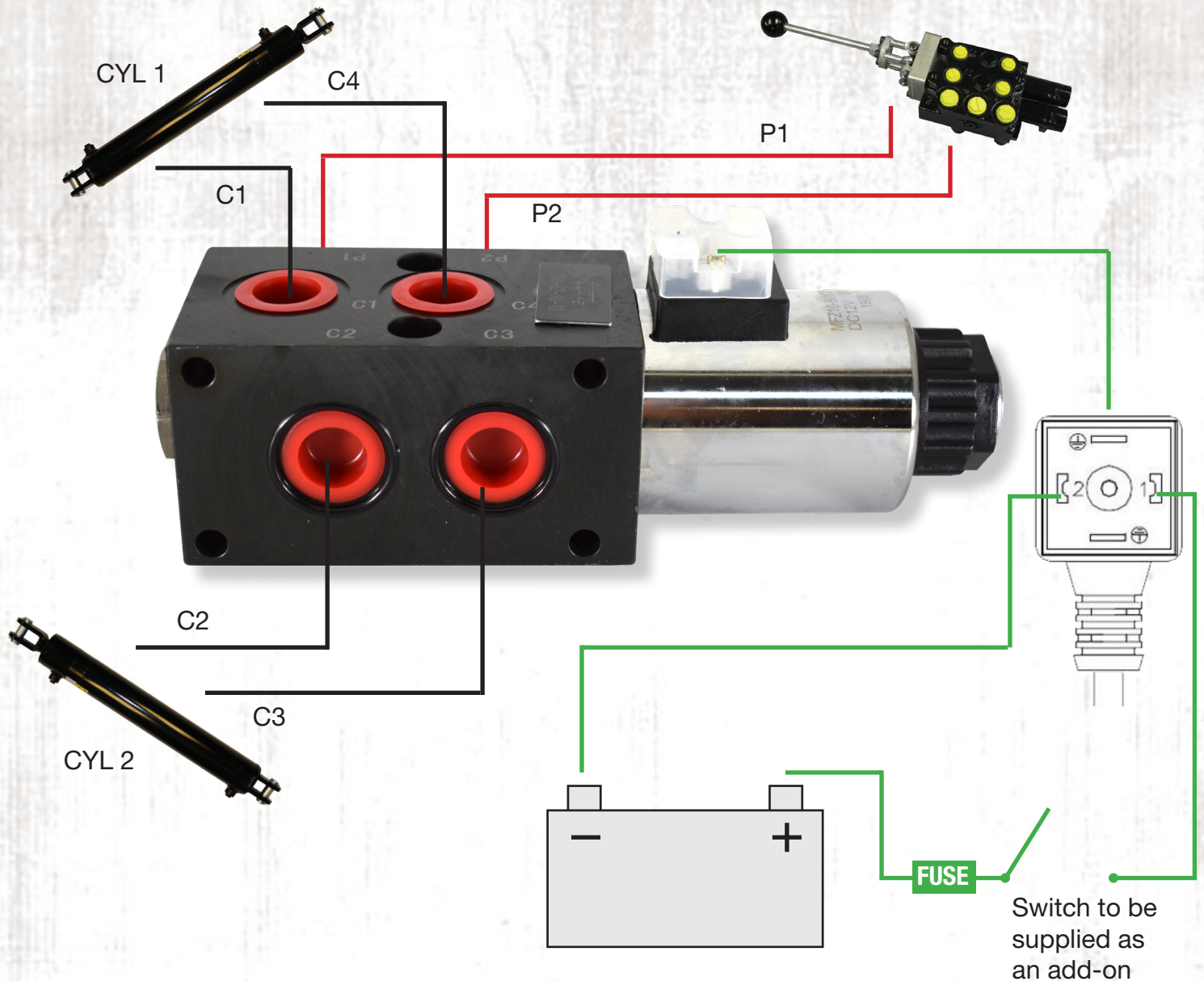
Standard Features

- **Flow Rate:** 24 GPM
- **Operating Pressure:** 3,500 PSI
- **Operated:** Electric
- **Manual Override:** Standard
- **Drain:** Internal
- **Circuit:** 01
- **Ports:** #10 Orb Ports
- **Voltage:** 12 DC V
 - Resistance: 3.2
 - Power: 45 W
 - Current: 3.75 A
- **Coil:** DIN 43650 - ISO 4400 Class H; Type M1; IP65
- **Seals:** NBR



SMALL DOUBLER ASSEMBLY

Don't see the options you need? Contact DFP at sales@dakotafluidpower.com or dakotafluidpower.com



Assembly Instructions:

- P1 & P2 connect to Valve/Remote Ports for directional flow.
- C1 & C4 Connect to Cyl 1 as these ports are normally open when coil is off. They will close when coil is energized.
- C2 & C3 connect to Cyl 2 as these ports are normally closed when coil is off. They will open when coil is energized.