

# DUAL RELIEF VALVE MANIFOLD

This newly developed dual relief valve manifold is great for tandem pump applications up to 40 GPM per section and 3,500 PSI operating pressure. This heavy duty manifold is made of ductile iron for increased strength and utilizes a pilot operated, balanced sliding spool, pressure relief cartridge valve for accurate and smooth pressure regulation.

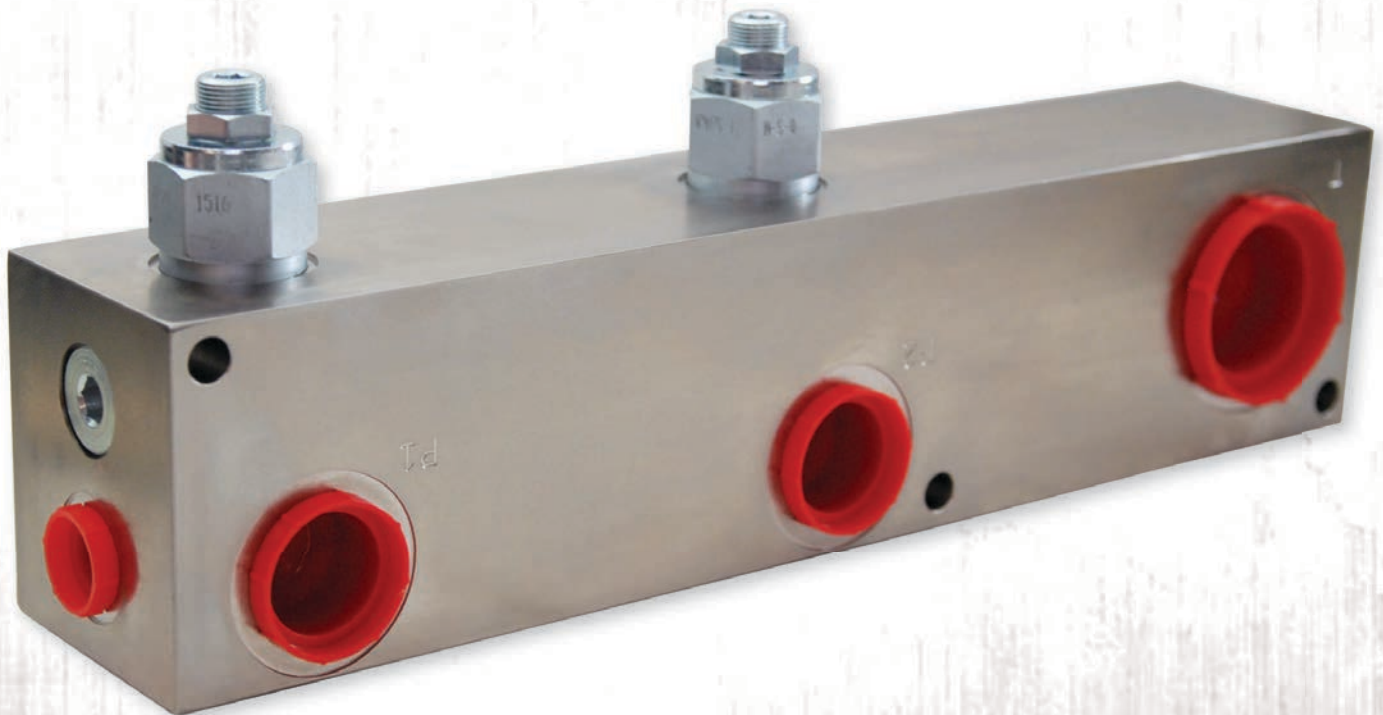
**PART # VA12744RO**

## Specifications:

- Port #8 ORB
- Port #12 ORB
- 40 GPM per section
- 3,500 PSI Operating Pressure
- Pilot Operated, Sliding Spool Pressure Relief Valve

## Typical Applications:

- Feed Trucks
- Fertilizer Trucks
- Manure Trucks
- Other Tandem Pump Applications



Version 08.03.16