



powered by



- control solutions

For more information please contact:  
Dakota Fluid Power  
1.888.417.1392

or visit the website at:  
[www.mobilestar.us/eTech](http://www.mobilestar.us/eTech)

# e tech ...the "out of the box" in a box solution to your technical needs!

**Harness the power of MobileStar!**



As an equipment technician, time is money! How often does a problem occur when you're not there to evaluate it? Are you experiencing recurring problems with your machinery? Why waste time and money waiting on location for something to happen?

There is a solution...eTech!

Connect your equipment to an eTech System and you can monitor and diagnose problems without being 'on-site'.

With an eTech System connected to your equipment, you can scroll back through time to view what occurred and use the information to diagnose the problem...remotely!



## CONNECT AND GO



- Remote Monitoring**
- Diagnostics**
- Real-Time Analytics**
- Data History Storage**
- Customization**

### Knowledge is Power!

Take the guesswork out of technical diagnostics and empower yourself with the eTech System.

The eTech System runs on the proven and effective MobileStar Solution for remote monitoring of equipment.

Open up a browser, connect to your eTech System and take advantage of this powerful tool.

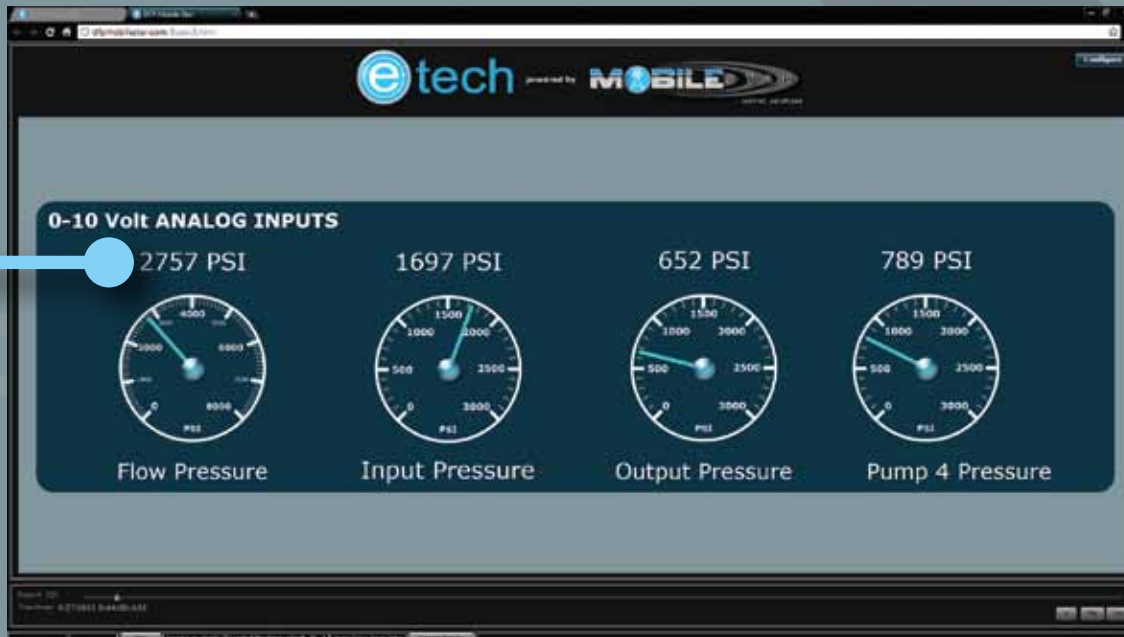
The eTech System provides you with valuable diagnostics information to keep track of what happens with your connected equipment... in real time... and in the past.



- 1 System Data: Voltage Meter
- 2 High Speed Pulse Inputs - up to 2 sensors
- 3 Digital Inputs - up to 4 high active inputs sensors
- 4 0-10 Volt Analog Inputs - up to 4 sensors
- 5 0-20 mA Analog Inputs - up to 4 sensors
- 6 History Graph - view data over time
- 7 Time Frame - scroll through time to see what happened when or generate a log file
- 8 Configure Labels and Gauges - set your own gauge values, types and labels

**Works in any browser connected to the internet!**

Zoom functionality for a closer look



### Specifications:

**System Supply Voltage:** 8-30vdc

#### 14 Configurable Inputs:

- 4 x 0..10v Analog Inputs with 12 Bit resolution (Pressure / Temp)
- 4 x 0..20ma Analog Inputs with 12 bit resolution (Pressure / Temp)
- 2 x High speed pulse inputs with 20 kHz max (Flow / RPM)
- 4 x Digital High Active Inputs. (Pressure Switches)

**Screen configurable scale factors to allow the use of almost any brand of sensor.**

**Internal Antennas for Cellular network & GPS.**

**Sealed Case for all weather environments.**