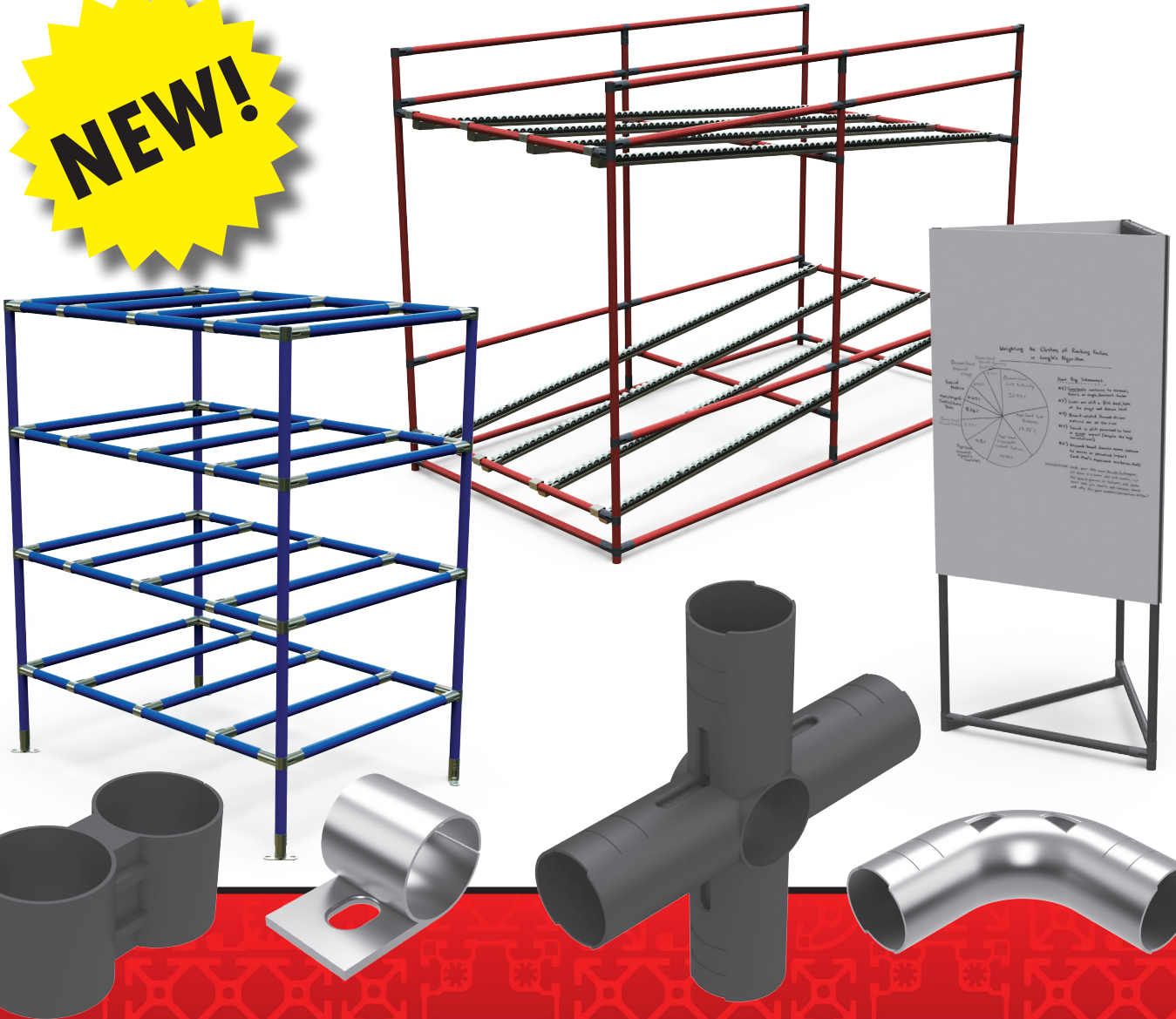


PARCO, INC.



Kwik Tube Framing System

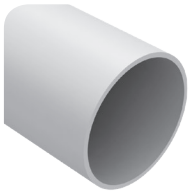


K W I K T U B E F R A M I N G S Y S T E M C A T A L O G
Economical • Easy to Assemble & Reconfigure • Compatible with Industry 28mm Diameter Tubing

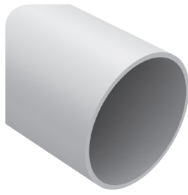
www.parco-inc.com

REV 2019-2

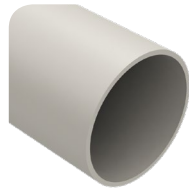
Kwik Tube - 28mm Framing System & Components



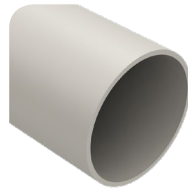
KTW-2000
2M Long White
1mm Wall Tube



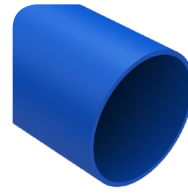
KTW-4000
4M Long White
1mm Wall Tube



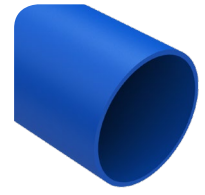
KTI-2000
2M Long Ivory
1mm Wall Tube



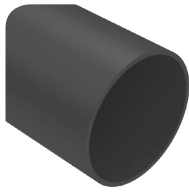
KTI-4000
4M Long Ivory
1mm Wall Tube



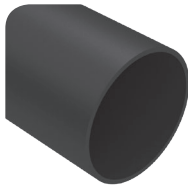
KTB-2000
2M Long Blue
1mm Wall Tube



KTB-4000
4M Long Blue
1mm Wall Tube



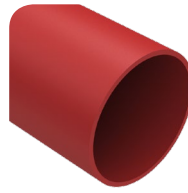
KTBL-2000
2M Long Black
1mm Wall Tube



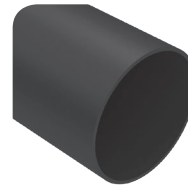
KTBL-4000
4M Long Black
1mm Wall Tube



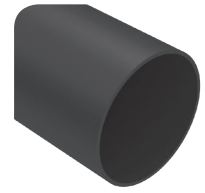
KTR-2000
2M Long Red
1mm Wall Tube



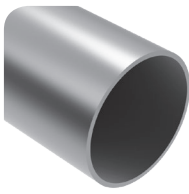
KTR-4000
4M Long Red
1mm Wall Tube



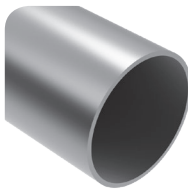
KTESD
2M Long Black
0.8mm Wall Tube



KTESD
4M Long Black
0.8mm Wall Tube



KTS-2000
2M Long Steel
0.8mm Wall Tube



KTS-4000
4M Long Steel
0.8mm Wall Tube



KF-1
Black Tee
Joint Assembly



KF-2
Black Corner
Joint Assembly



KF-3
Black 3 Way
Cross Joint



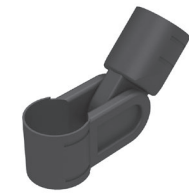
KF-4
Black 4 Way
Cross Joint



KF-5
Black 5 Way
Cross Joint



KF-6
Black
Intersection Joint



KF-7
Black Pivot Tee
Joint Assembly



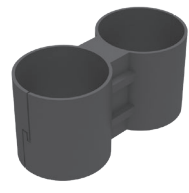
KF-8
Black Parallel
Hinge Joint



KF-9
Black 45° Fixed
Angle Joint



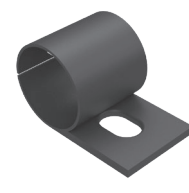
KF-10
Black Tee Hinge
Joint Assembly



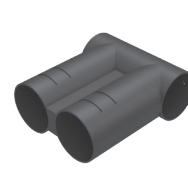
KF-11
Black Parallel
Joint Assembly



KF-12
Black Double
Pivot Joint



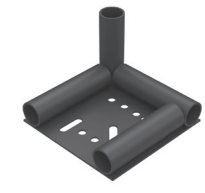
KF-13
Black Flat
Clamp Joint



KF-14
Black Double
Tee Joint



KF-15
Black 90°
Elbow Joint



KF-16
Heavy Duty
Caster Splint

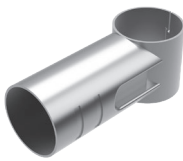
Kwik Tube - 28mm Framing System & Components



KF-17
Black
Foot Bracket



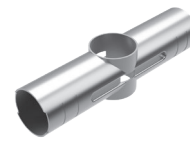
KF-18
Black Fixed
Base Foot



KFC-1
Chrome Plated
Tee Joint



KFC-2
Chrome Plated
Corner Joint



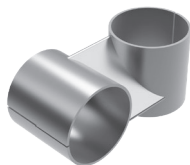
KFC-3
Chrome Plated
3 Way Cross Joint



KFC-4
Chrome Plated
4 Way Cross Joint



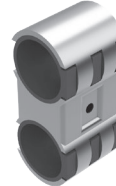
KFC-5
Chrome Plated
5 Way Cross Joint



KFC-6
Chrome Plated
Intersection Joint



KFC-7
Chrome Plated
Pivot Tee Joint



KFC-8
Chrome Parallel
Hinge Joint



KFC-9
Chrome 45°
Fixed Angle Joint



KFC-10
Chrome Plated
Tee Hinge Joint



KFC-11
Chrome Plated
Parallel Joint



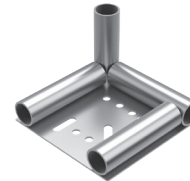
KFC-12
Chrome Plated
Double Pivot Joint



KFC-13
Chrome Plated
Flat Clamp Joint



KFC-15
Chrome Plated
90° Elbow Joint



KFC-16
Chrome Heavy
Duty Caster Splint



KFC-17
Chrome Plated
Foot Bracket



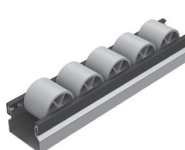
KFC-18
Chrome Plated
Fixed Foot Base



KF-19
Replacement
Slide Insert



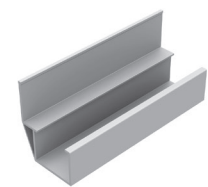
KF-20
Black 28mm
Tubing End Cap



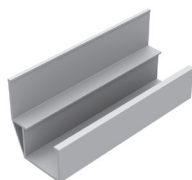
KRT-2000
Roller Track
Profile - 2000mm



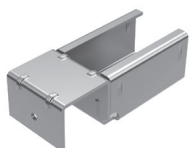
KRTF-2000
Roller Track
Profile - 2000mm



KGR-2000
2000mm Guide
Rail Lateral 32v



KGR-4500
4500mm Guide
Rail Lateral 32



KHB-1
Holding Bracket
for Roller Track



KHB-2
Holding Bracket
with Stop for
Roller Track



KHB-3
Variable Holding
Outer Bracket for
Roller Track



KHB-4
Variable Holding
Inner Bracket for
Roller Track



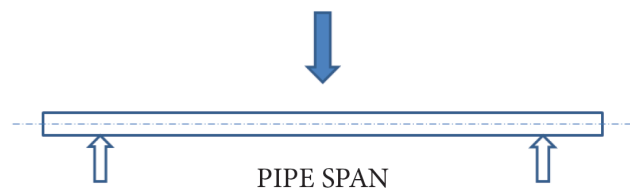
KHB-5
Mounting
Bracket for
Roller Track



9100 Front Street
 Fort Wayne, IN 46818
 Phone: (800) 817-0617
 Fax: (260) 451-0843
 www.parco-inc.com

Materials:

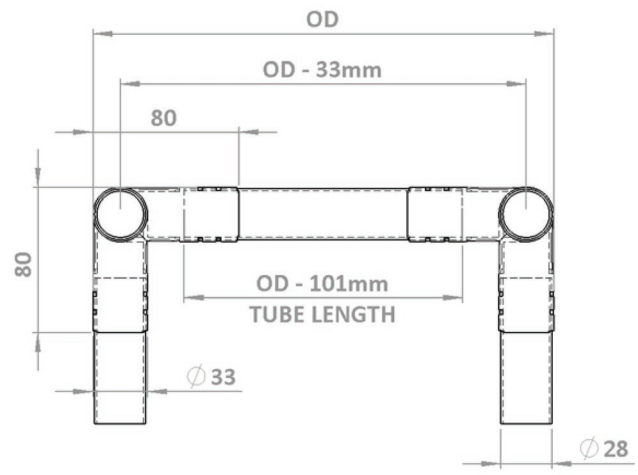
- Tubing: SPCC-HR with PE Coating
- Connections: Steel with Electrophoretic or Chromeplating



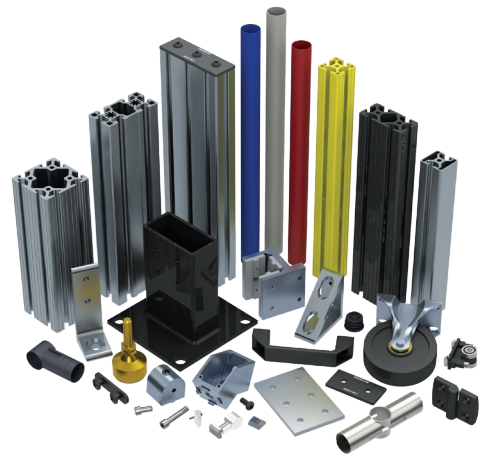
| Kwik Tube Strength Testing | | |
|----------------------------|---------------|---------------------|
| Pipe Span | 1mm Kwik Tube | 0.8mm ESD/Stainless |
| 12" LG. | 860 lbs. | 462 lbs. |
| 18" LG. | 476 lbs. | 392 lbs. |
| 24" LG. | 442 lbs. | 315 lbs. |
| 30" LG. | 322 lbs. | 274 lbs. |
| 36" LG. | 320 lbs. | 221 lbs. |
| 42" LG. | 262 lbs. | 196 lbs. |
| 48" LG. | 242 lbs. | 188 lbs. |
| 54" LG. | 224 lbs. | 175 lbs. |
| 60" LG. | 216 lbs. | 169 lbs. |

| Kwik Tube Chemical Resistance | | |
|-------------------------------|---------------------|----------------|
| Contact Material | Plastic Coated Tube | Various Joints |
| Alkaline Substance | Yes | Yes |
| Acidic Substance | Yes | No |
| Grease | Yes | Yes |
| Alcohol | No | Yes |
| Oil | Neutral | Yes |
| Benzene/Toluene | No | Yes |

Dimension Calculation



Other Great Products From Parco, Inc.



Compatible With Fractional & Metric Extrusion & Components

Distributed By: